



Waterproof Panel PCs

ARP-3800AX / ARP-5500AX Series



Index

Introduction	04
Benchtop Stand	06
Ceiling Mount	06
Pedestal Mount	07
Pendant Arm Mount	08
Wall Mount	10
Keyboard Bracket	11

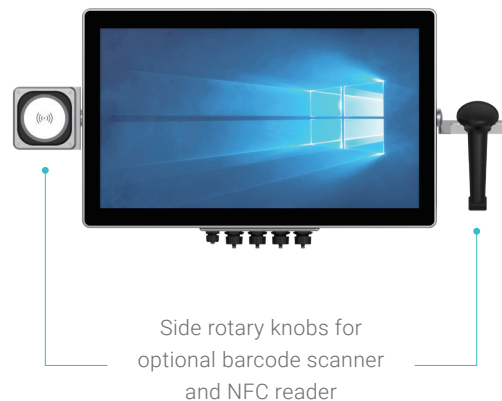
5-Wire Resistive Touch

15"	ARP-5515AX	1024 x 768
17"	ARP-5517AX	1280 x 1024
19"	ARP-5519AX	1280 x 1024



Projected Capacitive Touch

21.5"	ARP-3821AX	1920 x 1080
24"	ARP-3824AX	1920 x 1080



IR Touch

42"	ARP-5542AX	1920 x 1080
-----	------------	-------------

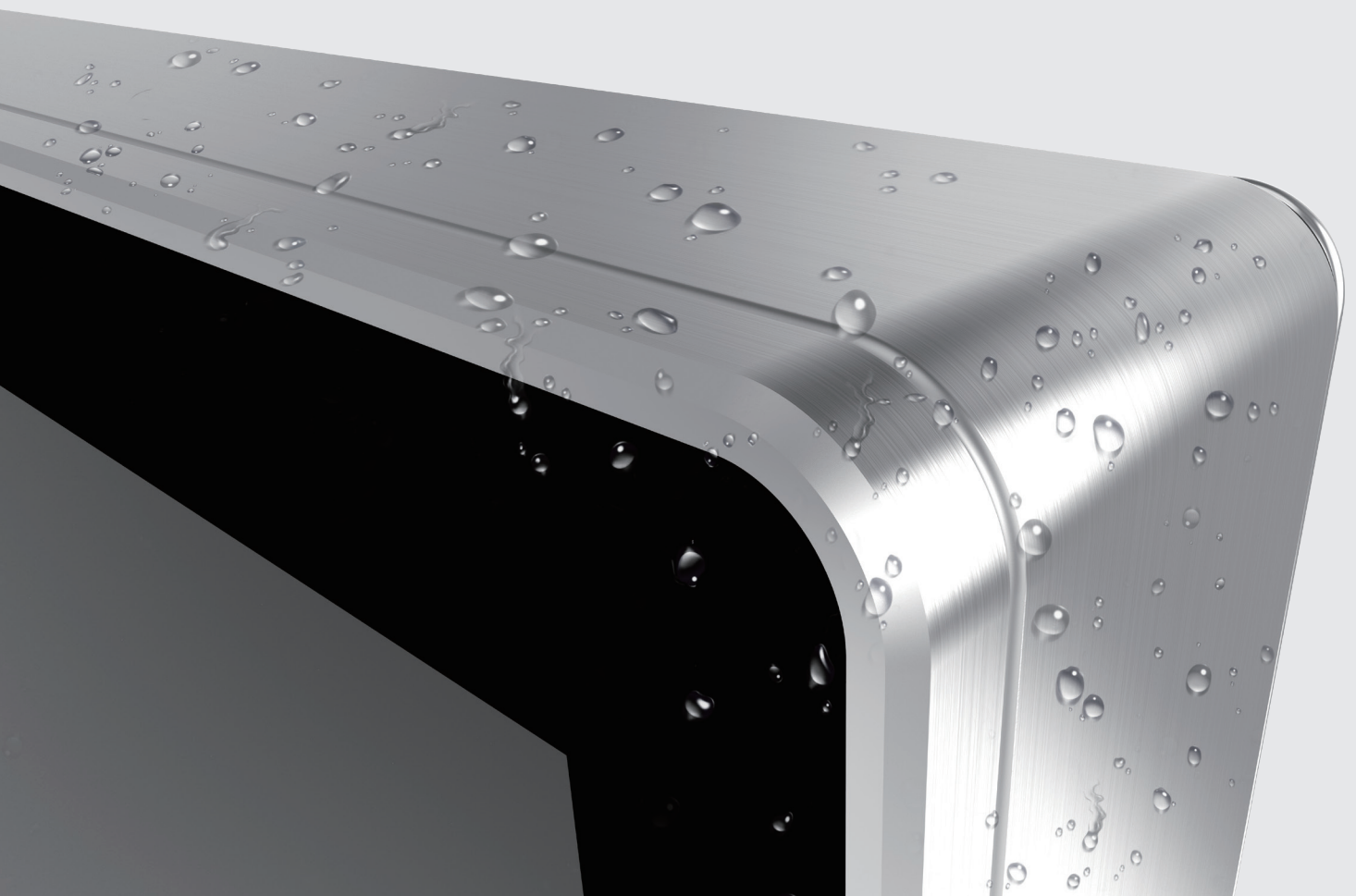


Waterproof Series

NEMA
4X

IP66

The Waterproof Series is designed for industrial environments where protection against water, dust, and corrosive contaminants is essential. Built with a sealed enclosure architecture, the series meets IP66 and NEMA 4X protection standards, ensuring reliable operation in washdown-prone and harsh industrial settings. With support for flexible mounting options, waterproof I/O configurations, and optional feature modules, the Waterproof Series provides a durable and adaptable platform for cleanrooms, production facilities, and other demanding applications.





Powered by PoE or DC 24V

Configurations are available to be powered by 802.3bt compliant PoE switches or 24V DC.



WIFI Boot ThinManager Ready

ThinManager Ready Configurations are available to boot from ThinManager Server.



Optional UL Class I, Division 2 (C1D2) Compliance

Configurations are available to be used in Class 1 Division 2 locations.



Versatile Mounting

Benchtop, Pedestal, Ceiling, Wall mount and Pendant Arm mounting options are available



Benchtop Stand

Ideal for desk or workbench use, the benchtop stand offers a compact and stable solution for operators who require easy access and flexibility during daily operations.

Benchtop Stand

for ARP-5515AX / ARP-5517AX / ARP-5519AX / ARP-3821AX / ARP-3824AX



XDS-000



Ceiling Mount

Mounted from above, the ceiling mount enables a clear floor layout and optimized workspace, making it suitable for environments with limited space or specific installation requirements.

Ceiling Stand

for ARP-5515AX / ARP-5517AX / ARP-5519AX / ARP-3821AX / ARP-3824AX

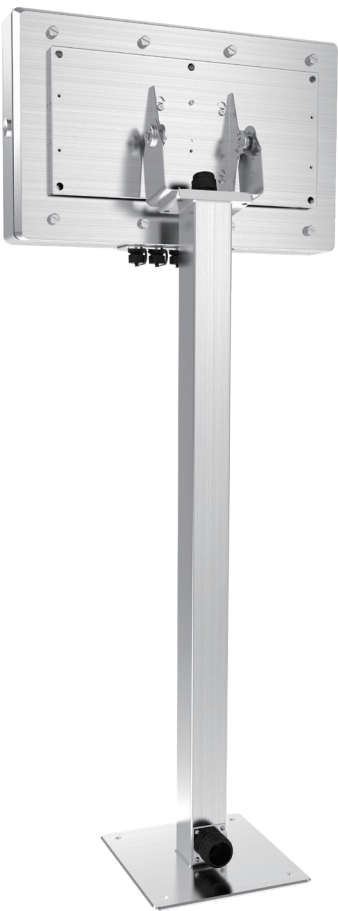


XCM-002



Pedestal Mount

for ARP-5515AX / ARP-5517AX / ARP-5519AX / ARP-3821AX / ARP-3824AX



Pedestal Mount

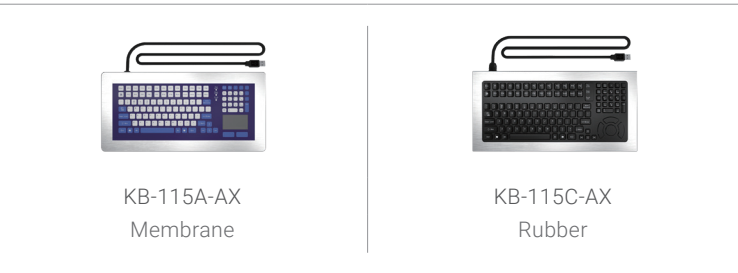
The pedestal mount provides a freestanding installation with enhanced stability, allowing flexible placement in open areas or production floors.



Keyboard Tray



Keyboard Options



Pendant Arm Mount

Designed with an adjustable arm structure, the Pendant Arm Mount allows flexible positioning of the display to support various operational needs while maintaining a clean and organized workspace.



Pendant Arm Mount

for ARP-5515AX / ARP-5517AX / ARP-5519AX / ARP-3821AX / ARP-3824AX



XWM-005-AX01



The pendant arm is designed to rotate for operation and can be positioned parallel to the wall when not in use, helping to save space and reduce obstruction in the workspace.



Pendant Arm Mount

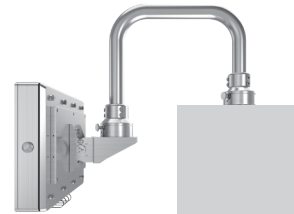
for ARP-5515AX / ARP-5517AX / ARP-5519AX / ARP-3821AX / ARP-3824AX



+



>



XMM-001-AX01

AX-115 +
KB-115



Pendant Arm Mount

Panel PC

Keyboard Tray

Keyboard Options



XMM-001-AX01
XWM-005-AX01

+



+



+



KB-115A-AX
Membrane



KB-115C-AX
Rubber

ARP-3821AX

AX-115
For ARP-3821AX

Wall Mount

Designed for secure installation on vertical surfaces, the wall mount option helps save valuable floor space while providing a stable and streamlined setup.



Wall Mount

for ARP-5515AX / ARP-5517AX / ARP-5519AX / ARP-3821AX / ARP-3824AX



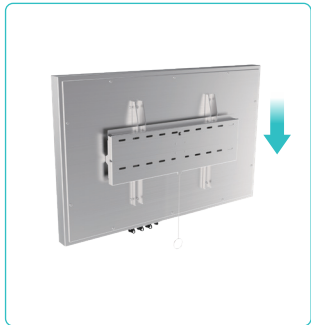
+



>



XWM-001



Slide the bracket attached to the Panel PC into the wall mount bracket to securely connect the two components.

Wall Mount

for ARP-5542AX



+



>



XWM-003

Keyboard Bracket

Designed for use with wall-mounted Panel PCs, the keyboard bracket is available with an extendable foldable work surface or a height-adjustable keyboard tray, supporting ergonomic operation and a space-efficient workstation layout.



Keyboard Options



KB-115A-AX
Membrane



KB-115C-AX
Rubber

XWM-KB-115-01

Wall Mount with Foldable Work Surface

XWM-KB-115-01 is a foldable, wall-mounted keyboard tray featuring a horizontal folding design. The tray folds 90° inward on both sides beneath the work surface.



Keyboard Bracket



XWM-KB-115-01

+



Keyboard

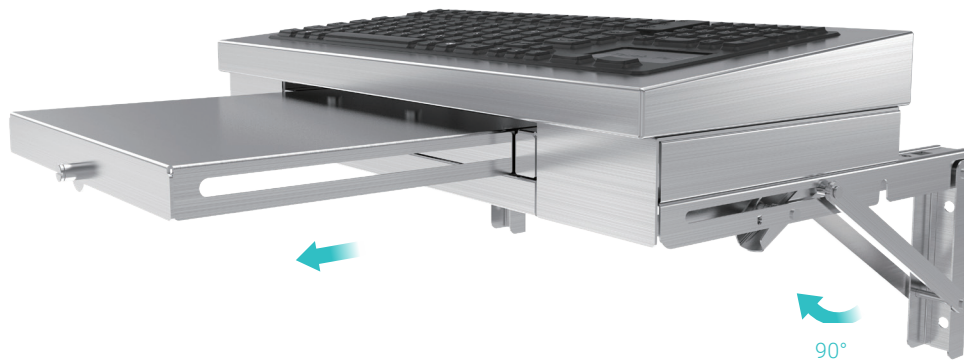
>



XWM-KB-115-02

Wall Mount with Foldable Keyboard Tray

XWM-KB-115-02 is a foldable wall-mounted keyboard tray that extends vertically up to 90° from the wall. The tray can be pulled out for use and folded flat against the wall when not in use.



The keyboard bracket folds flat against the wall when not in use, saving space and keeping the area clear.

Keyboard Bracket



XWM-KB-115-02

+



Keyboard

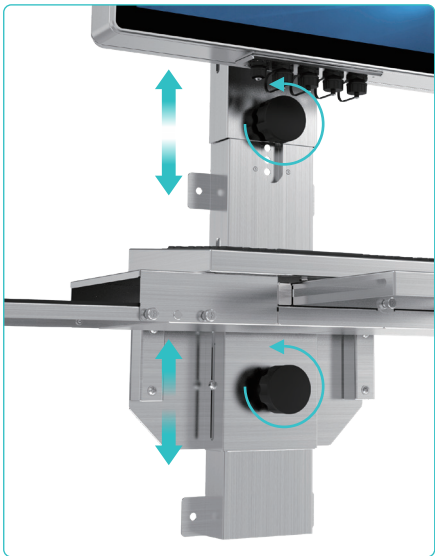
>



XWM-006

Wall Mount with Adjustable Display & Foldable Work Surface

XWM-006 offers ergonomic height adjustment via a rotary knob, ensuring optimal positioning for both display and keyboard. A pull-out drawer and foldable work surface provide convenient storage and extra workspace, keeping the workstation clean, organized, and efficient.



Adjust display and keyboard height with rotary knobs.



Versatile Bracket

for ARP-5515AX / ARP-5517AX / ARP-5519AX / ARP-3821AX / ARP-3824AX



XWM-006



Keyboard



www.aristaipc.com

ARISTA Corporation (USA)

Address: 48460 Lakeview Blvd, Fremont, CA 94538

Phone: +1-510-226-1800

eFax: 510-405-8437

Email: sales@goarista.com